



View from North-West (Lauber Architekten)

Department Store Building Karstadt-Oberpollinger

Munich, Kapellenstrasse 5

Rebuilding, complete renovation and enlarging by a new building part in Munich Center.
Building of 6 new stories on the existing underground garage with 6 levels underground
New building part with 4 basements and 6 stories above ground.
Due to the intensive reconstruction and the building of 6 new stories a very heavy intervention in the building substance of the existing underground garage was necessary.

Gross volume: approx. 120.000 m³
Costs of Building: approx. 35 Mio EUR

Client:

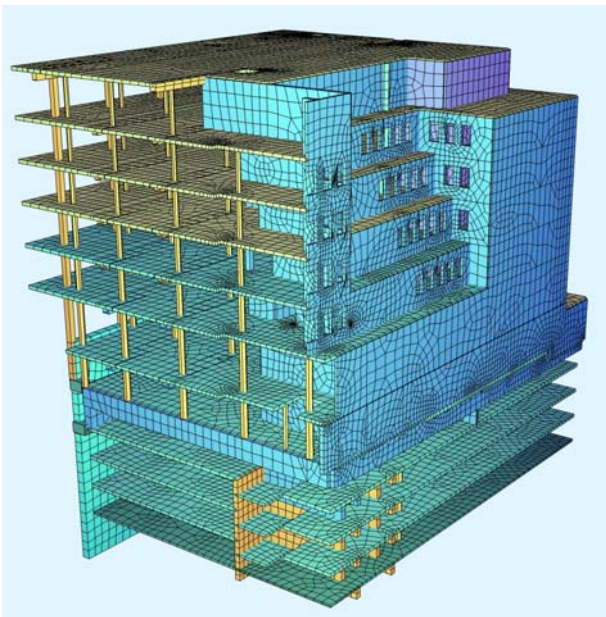
Grundstuecksgesellschaft Muenchen Synagogenplatz GbR
Josef Esch Fonds-Projekt GmbH, Steinstrasse 2-4
D-53844 Troisdorf

Architect:

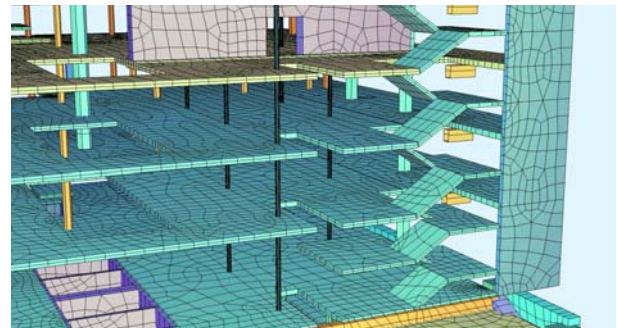
ABH - Architekturbuero Heese GmbH, Munich and
Lauber Architekten GmbH, Munich

Our services:

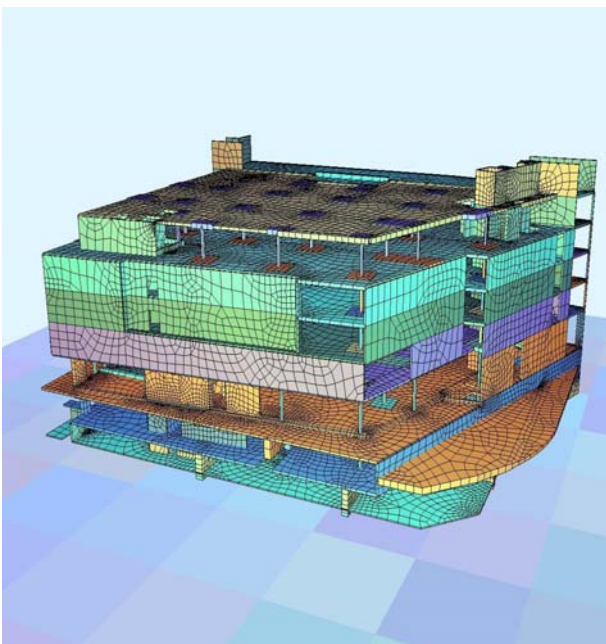
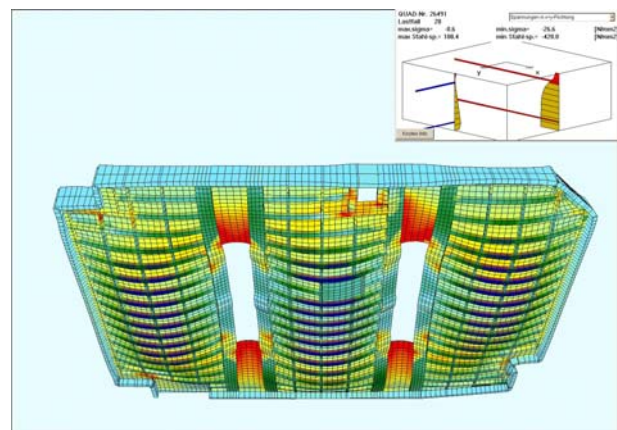
Official checking and supervising
Complete and independent computation of the complex structure by means of a complete spatial FE model
Non-linear calculation of spatial structure of slabs of underground-garage with high pressure forces



Computer model of building part B (new building)



Computer model of building part B (new building) - Detail

Computer model of building part C (2nd b to 5th fl. – 6 add. stories)

Slab of existing basement with high pressure forces (non-linear computation)